

### Standard Aquatic Vegetation Summary Sheet

Code No	Plant Name	Total number of AVAS's for each Density Category				Calculations				Sum of Columns 5-8	Total No. of AVAS	Col 9 divided by Col 10
		A	B	C	D	A x 1	B x 10	C x 40	D x 80	9	10	11
1	Eurasian watermilfoil	3	7	0	0	3	70	0	0	73	85	0.86
2	Curly leaf pondweed	0	0	0	0	0	0	0	0			
3	Chara	1	50	10	0	1	500	400	0	901	85	10.60
4	Thinleaf pondweed	1	13	9	1	1	130	360	80	571	85	6.72
5	Flatstem pondweed	0	10	0	0	0	100	0	0	100	85	1.18
6	Robbins pondweed	0	0	0	0	0	0	0	0			
7	Variable pondweed	2	29	34	4	2	290	1360	320	1972	85	23.20
8	White stem pondweed	0	0	0	0	0	0	0	0			
9	Richardsons pondweed	0	0	0	0	0	0	0	0			
10	Illinois pondweed	0	0	0	0	0	0	0	0			
11	Large leaf pondweed	1	23	1	0	1	230	40	0	271	85	3.19
12	American pondweed	0	1	0	0	0	10	0	0	10	85	0.12
13	Floating leaf pondweed	0	0	0	0	0	0	0	0			
14	Water stargrass	0	0	0	0	0	0	0	0			
15	Wild celery	0	28	11	1	0	280	440	80	800	85	9.41
16	Sagittaria (submersed)	0	0	0	0	0	0	0	0			
17	Northern watermilfoil	0	0	0	0	0	0	0	0			
18	Green watermilfoil	0	0	0	0	0	0	0	0			
19	Variable leaf watermilfoil	0	0	0	0	0	0	0	0			
20	Coontail	0	0	0	0	0	0	0	0			
21	Elodea	0	0	0	0	0	0	0	0			
22	Bladderwort	0	0	0	0	0	0	0	0			
23	Mini Bladderwort	0	0	0	0	0	0	0	0			
24	Buttercup	0	0	0	0	0	0	0	0			
25	Naiad	0	26	2	0	0	260	80	0	340	85	4.00
26	Brittle naiad	0	0	0	0	0	0	0	0			
27	Sago Pondweed	0	0	0	0	0	0	0	0			
28	Cabomba	0	1	0	0	0	10	0	0	10	85	0.12
29	Starry stonewort	0	0	0	0	0	0	0	0			
30	Water Lily	2	27	9	8	2	270	360	640	1272	85	14.96
31	Spatterdock	0	0	0	0	0	0	0	0			
32	Water shield	0	12	5	1	0	120	200	80	400	85	4.71
33	Lemna minor	0	0	0	0	0	0	0	0			
34	Greater duckweed	0	0	0	0	0	0	0	0			
35	Watermeal	0	0	0	0	0	0	0	0			
36	Arrowhead	0	27	3	0	0	270	120	0	390	85	4.59
37	Pickernelweed	0	0	0	0	0	0	0	0			
38	Arrow arum	0	0	0	0	0	0	0	0			
39	Cattail	0	17	4	0	0	170	160	0	330	85	3.88
40	Bulrush	0	20	2	0	0	200	80	0	280	85	3.29
41	Iris	0	0	0	0	0	0	0	0			
42	Swamp loosestrife	0	7	4	5	0	70	160	400	630	85	7.41
43	Purple loosestrife	0	1	0	0	0	10	0	0	10	85	0.12
44	Phragmites	0	0	0	0	0	0	0	0			
45		0	0	0	0	0	0	0	0			
46	Slender spikerush	0	0	0	0	0	0	0	0			
47	Smartweed	0	0	0	0	0	0	0	0			
48	Water marigold	0	0	0	0	0	0	0	0			
49	American lotus	0	0	0	0	0	0	0	0			
50		0	0	0	0		0	0	0			

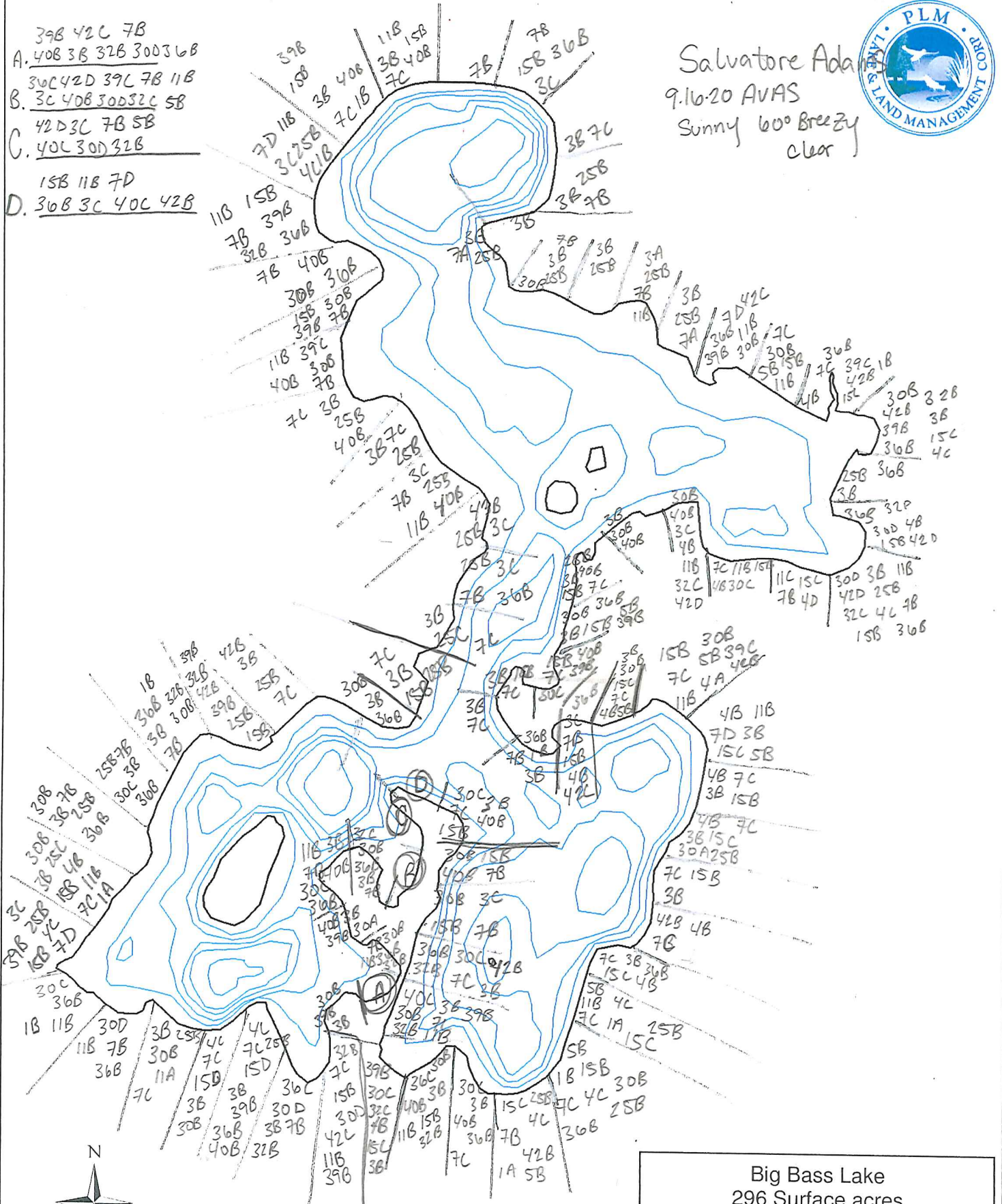
**Total cumulative cover**

**98.35**



Salvatore Ada  
9.16.20 AVAS  
Sunny 60° Breezy  
Clear

- A. 39B 42C 7B  
40B 3B 32B 30D 36B
- B. 30C 42D 39C 7B 11B  
3C 40B 30D 32C 5B
- C. 42D 3C 7B 5B  
40C 30D 32B
- D. 15B 11B 7D  
30B 3C 40C 42B



0 500 1,000 Feet

Big Bass Lake  
296 Surface acres  
Lake County  
Elk TWP  
T19,20N R14W Sec 3,4,27,33,34